



SCHOOL OF NURSING
CLINICAL LEARNING CENTER
UNIVERSITY OF MICHIGAN

Equipment Catalog

Updated 6/12/2020

Table of Contents

<u>TOPIC</u>	<u>PAGES</u>
Mannequins & Mannequin Props.....	3 - 13
Generic Equipment & Supplies.....	14 - 50
Wound Care Equipment.....	51 - 55
Catheterization.....	56 - 59
Ultrasound-Guided Models.....	60 - 65
Lumbar.....	66 - 67
Airway.....	68 - 73
Pediatric.....	74 - 85
OB/GYN.....	86 - 98
Fluid Administration.....	99 - 109
Head-to-toe.....	110 - 114
Breast & Testicle.....	115 - 123
Carts.....	124 - 130

Mannequins & Mannequin Props

Generic, Low Fidelity Adults



Amount Available: 8

Primary Use: used to practice skills on various body systems; are not sim-pad compatible

Generic, Mid-Fidelity Adults



Amount Available: 4

Primary Use: used to practice skills on various body systems; are sim-pad compatible, which allows for lung and heart sound simulation (4 sim-pads available)

High-Fidelity, Adult Mannequin: Sim-Man

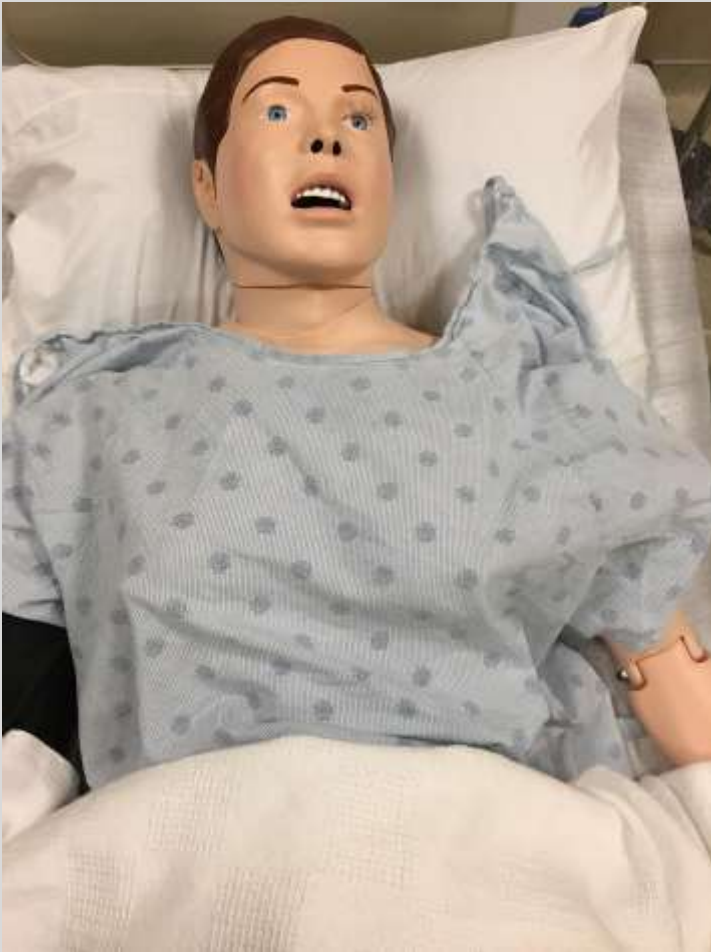


Amount Available: 2 (Jamie & Thomas)

Primary Use: an adult patient simulator designed to deliver the most realistic training possible, displaying neurological symptoms as well as physiological (ie. light sensitive pupils, bodily fluid excretion, breathing, vitals)

*Must be used in a simulation suite

High-Fidelity, Birthing Mannequin: Sim-Mom



Amount Available: 1

Primary Use: an adult, female patient simulator designed to deliver the most realistic training possible, displaying neurological symptoms as well as physiological. Commonly used for **birthing simulations**, including normal births, shoulder dystocia, and post partum hemorrhage.

*Must be used in a simulation suite

Victoria: Birthing Mannequin



Amount Available: 1

Primary Use: an adult, female patient simulator designed to deliver the most realistic training possible, displaying neurological symptoms as well as physiological. Commonly used for birthing simulations, including normal births, **breech**, and post partum hemorrhage.

*Must be used in a simulation suite

Mid-Fidelity, Pediatric Mannequins (Laerdal)



(1-year old)

Amount Available: 1 five-year old, 1 one-year old, & 1 newborn

Primary Use: a child, patient simulator (ranging in age) designed to deliver the most realistic training possible, displaying neurological symptoms as well as physiological (ie. light sensitive pupils, bodily fluid excretion, breathing, vitals)

*Better quality respiratory sounds than Gaumard mannequins

*Must be used in a simulation suite

High-Fidelity, Pediatric Mannequins (Gaumard)



(5-year old)

Amount Available: 1 five-year old, 1 one-year old, & 1 newborn

Primary Use: a child, patient simulator (ranging in age) designed to deliver the most realistic training possible, displaying neurological symptoms as well as physiological (ie. light sensitive pupils, bodily fluid excretion, breathing, vitals)

*Overall more realistic features (ie. Pupil reactions)

*Must be used in a simulation suite

Newborn Baby Doll



Amount Available: several

Primary Use: used in pediatric scenarios that don't require any mechanical complexity; often used as prop

Wigs & Glasses



Amount Available: multiple wigs and glasses of various colors and sizes



Primary Use: used to enhance to realism and specificity of a patient

Leg Edema Sleeves

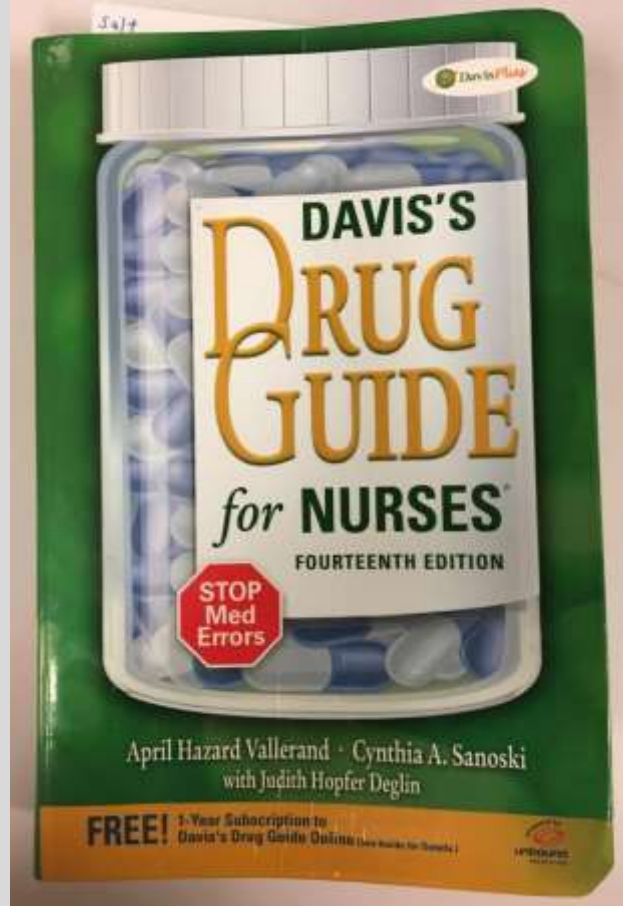


Amount Available: 2

Primary Use: used to simulate the appearance of swollen legs

Generic Equipment & Supplies

Medication Handbook



Amount Available: several

Primary Use: useful in situations where students are asked to look up various medications

Glo-Germ Kit



Amount Available: 4

Primary Use: tool to demonstrate hand washing, surface cleaning, hygiene, and containment techniques.

<http://www.glogerm.com/>

Compound Microscope



Amount Available: 6

Primary Use: an optical instrument used for viewing sample slides

Microscope with Digital Imaging



Amount Available: 1

Primary Use: an optical instrument used for viewing sample slides; the digital imaging software allows users to enlarge the image on the connected monitor screen

IV Pole



Amount Available: 23

Primary Use: used to hang fluids or prop alaris pumps

Calculators



Amount Available: several

Primary Use: used to assist students with med calculations

Injecta-Pad



Sizes: regular & small

Amount Available: 11 total

Primary Use: Intramuscular, subcutaneous, and intradermal injection practice

http://www.wallcur.com/Products/Practi-Injecta-Pad-Injection-Simulator_501PD.aspx

http://www.wallcur.com/Products/Practi-Mini-Injecta-Pad-Injection-Simulator_522MP.aspx

High-Quality Otoscopes

Amount Available: 42

Primary Use: used to practice examining ears;
high-magnification quality



Generic Otoscopes



Amount Available: 80

Primary Use: used to practice examining ears;
standard-magnification quality

Blood Pressure Cuff



Amount Available: 67

Primary Use: used to practice monitoring blood pressure

Mobile Blood Pressure Cuff



Amount Available: 7

Primary Use: used to practice monitoring blood pressure

Pediatric BP Cuff



Amount Available: 5

Primary Use: used to practice monitoring blood pressure

Large BP Cuff



Amount Available: 6

Primary Use: used to practice monitoring blood pressure

Blood Pressure Trainer (Machine)



Amount Available: 1

Primary Use: used to measure blood pressure

Stethoscope



Amount Available: 3 infant, 41 regular, 3 quad

Primary Use: used to practice taking blood pressure and listening to lung, heart, and bowel sounds

Double Stethoscope



Amount Available: 9

Primary Use: used to practice taking blood pressure and listening to lung, heart, and bowel sounds

Thermometer



Amount Available: 30

Primary Use: used to practice taking a patient's temperature

Weighing Scale



Amount Available: 2

Primary Use: used to weigh patient

EKG Caliper



Amount Available: 12

Primary Use: used to accurately measure characteristics such as thickness, distance, and diameter

Pulse Oximeter



Amount Available: 12

Primary Use: measures oxygen saturation of the blood

Bedside, Patient Bells



Amount Available: several

Primary Use: used for patient assistance and as a prop for various games

Wheelchair



Amount Available: 4

Primary Use: used to move patients

Slide Board

Amount Available: 2

Primary Use: used to move a patient



Stretcher



Amount Available: 4

Primary Use: used to transport patients

Goose-neck Lamps



Amount Available: 4

Primary Use: used for lighting during examinations

Hand-held Mirror



Amount Available: 4

Primary Use: used by a GTA/MUTA during exam instruction

Glucometer Machine



Amount Available: 4

Primary Use: used for monitoring blood glucose levels

Pupil Gauge/ Pen Light

Amount Available: several

Primary Use: used to gauge pupil dilation



Reflex Hammer



Amount Available: several

Primary Use: used to for testing reflexes

Physical Assessment Kit



Amount Available: several

Primary Use: several tools used during physical assessments



Manometer



Amount Available: 1

Primary Use: measuring low differential pressure in clean rooms and medical equipment

Ultrasound Machine



Amount Available: 3

Primary Use: makes images so that organs inside the body can be examined; used to help to see the needle to administer a block or perform an aspiration

http://www3.gehealthcare.com/en/products/categories/ultrasound/point_of_care_ultrasound/nextgen_logiq_e

Insulin Pen & Injecta Boxes



Amount Available: Multiple

Primary Use: used to practice administering insulin doses

Glucose Monitor/Insulin Pump



Amount Available: 4

Primary Use: portable device used to test blood glucose levels

Food Props



Amount Available: several

Primary Use: props used in patient-care simulations

Portable White Board



Amount Available: 1

Primary Use: used in the classroom as needed

Wound Care Equipment

Wound Care Model

Amount Available: 4

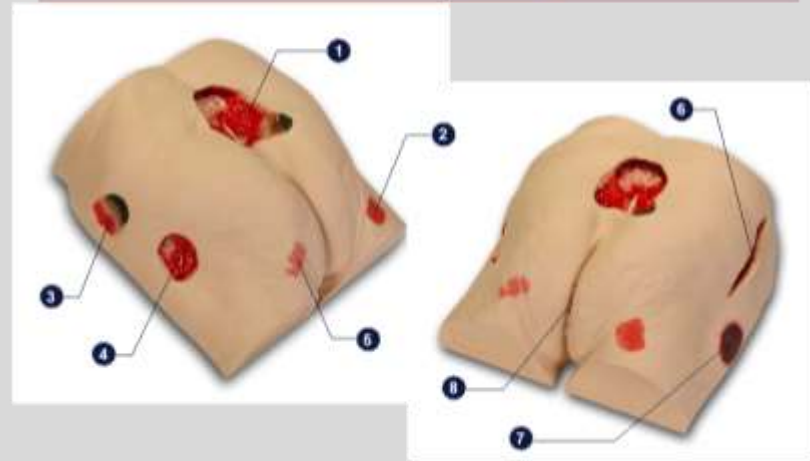
Primary Use: Wound cleansing and dressing practice



VATA

Anatomical Healthcare Models

Seymour II™ Wound Care Model - 0910



The following wounds, pressure ulcers* and foot abnormalities are presented on Seymour II™ Wound Care Model*

- | | |
|--|--|
| <ul style="list-style-type: none"> 1 Stage IV Pressure Ulcer with eschar, subcutaneous fat, undermining, tunneling, slough, exposed bone (with osteomyelitis) and rolled wound edges 2 Stage II Ischial Pressure Ulcer 3 Unstageable Pressure Ulcer with Slough and Eschar 4 Stage III Pressure Ulcer with subcutaneous fat, slough, granulation tissue, undermining and tunneling | <ul style="list-style-type: none"> 5 Stage I Ischial Pressure Ulcer 6 6 1/2" long dehiscenced surgical wound with subcutaneous fat and original suture marks visible 7 Suspected OTI (Deep Tissue Injury) 8 Possible rectal fissure, either a tear from splitting the buttocks (usually happens when patients are pulled onto a cart) or from erosion from stool or urine trapped in the skin fold |
|--|--|

*We have included the most likely site tag-based descriptions, but realize many wounds can appear in the same location, having different etiologies. The definitive diagnosis is up to the clinician and interprofessional wound care team.

Care Instructions:

To clean your model VATA recommends soap and warm water. Some customers have found applying a barrier/skin prep can give them the adhesion they are looking for.

308 South Sequoia Parkway | Canby, Oregon 97013 USA
 ph. 503.651.5050 | fax 503.651.5052 | www.vatainc.com | email info@vatainc.com

'Wilma' Wound Foot



Amount Available: 2

Primary Use: Wound cleansing and dressing practice

Trauma Wound Kit



Amount Available: 1

Primary Use: silicone applicators that simulate detailed, adult wounds

Pediatric Trauma Kit



Amount Available: 1

Primary Use: silicone applicators that simulate detailed, pediatric wounds

Catheterization Equipment

Female Catheterization Model



Amount Available: 2

Primary Use: demonstration and practice in female urinary catheterization

Male Catheterization Model



Amount Available: 1

Primary Use: demonstration and practice in male urinary catheterization

<https://www.enasco.com/product/LF00855U>

Cross-Section Male Catheterization Model



Amount Available: 2

Primary Use: allows students to study the internal anatomy while following what happens when they catheterize a male patient



<https://www.enasco.com/product/LF01025U>

Ultrasound-Guided Models

Ultrasound Training Model

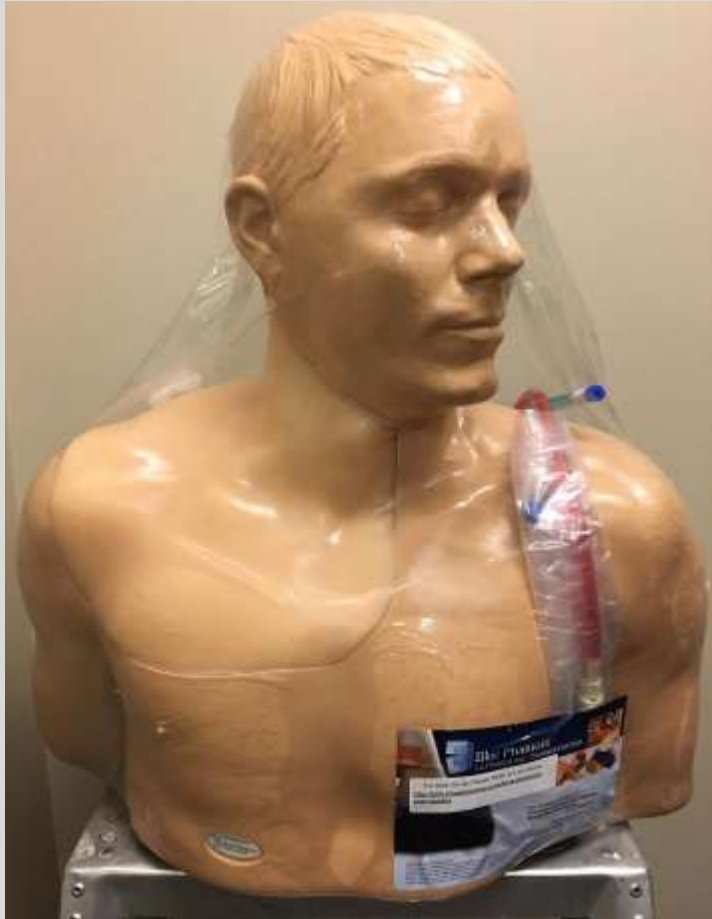


Amount Available: 6

Primary Use: used for both
ultrasound guided thoracentesis and
chest tube thoracostomy

file:///C:/Users/rderoch/Downloads/BP_Thoracentesis-User_Guide_11-25-08.pdf

Ultrasound Central Line Model



Amount Available: 6

Primary Use: used for upper torso ultrasound guided central line placement training

<https://www.bluephantom.com/product/Gen-II-Ultrasound-Central-Line-Model-with-Transparent-Insert.aspx?cid=409>

Central Line Task Trainer



Amount Available: 2

Primary Use: used for upper torso
ultrasound guided central line
placement training

Femoral Line - Central Line Task Trainer



Amount Available: 2

Primary Use: an ultrasound compatible task trainer used for training for central venous or arterial access using the femoral site

<https://www.simulab.com/products/femoralineman-system>

Ultrasound Paracentesis Trainer



Amount Available: 10

Primary Use: used to perform paracentesis from diagnosis to draining simulated ascitic fluid from the peritoneal cavity in the abdomen



<https://www.simulab.com/products/ultrasound-paracentesis-trainer>

Lumbar Equipment

Lumbar Puncture Simulator II



Amount Available: 1

Primary Use: practice collecting CSF fluid and measuring CSF fluid pressure

<https://www.kyotokagaku.com/products/detail01/m43b.html>

Airway Equipment

Ventilator



Amount Available: 2 (2 different models)

Primary Use: a machine that supports breathing

Student Auscultation Manikin/ “Lung Man”



Amount Available: 1

Primary Use: used to simulate heart/lung combination sounds

<https://www.simulaids.com/product/718-8800>

Chest Tube Task Trainer



Amount Available: 2

Primary Use: allows for a variety of chest drain insertion techniques to be performed including ultrasound-guided

Resusci Anne QCPR Trainer



Amount Available: 4

Primary Use: Practicing adult CPR skills, learning patient handling, and practicing first aid skills on an adult

<http://www.laerdal.com/us/item/173-00150>

CPR Task Trainer



Amount Available: 10 adult (4 peds – see “pediatric equipment” section)

Primary Use: practicing CPR skills, AED use, and the Heimlich maneuver on adult patient

<https://www.enasco.com/product/LF06102UG>

Pediatric Equipment

Congenital Hip Dislocation “Baby Hippy” Simulator



Amount Available: 1

Primary Use: to practice diagnosing congenital hip dislocation and hip dislocatability

<http://www.laerdal.com/us/doc/139/Baby-Hippy#/Info>

Lumbar Puncture Baby

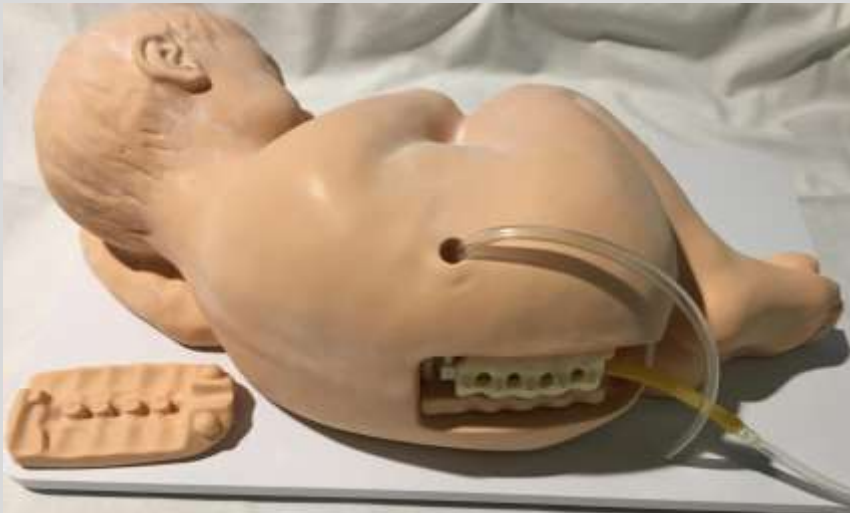
Amount Available: 4

Primary Use: used for pediatric lumbar puncture training (with flexible body form); ultrasound compatible



<https://www.simulab.com/products/lumbarpuncturebaby-system-simulated-iv-bag>

Pediatric Lumbar Puncture Simulator



Amount Available: 1

Primary Use: practice performing a lumbar puncture as a diagnostic procedure in order to collect cerebrospinal fluid (CSF) samples, measure cerebrospinal fluid pressure, or for intrathecal administration

Pediatric Injectable Training Head Simulator



Amount Available: 1

Primary Use: for demonstrating and practicing infusions and injections in the temporal and jugular veins of a newborn to twelve-month-old infant

<https://www.enasco.com/product/LF00999U/>

3 Year-Old Child Airway Management Trainer



Amount Available: 1

Primary Use: performing nasal and oral intubation

<https://www.simulaid.com/product/101-125>

Infant Airway Management Trainer



Amount Available: 2

Primary Use: for teaching and practicing basic and advanced airway management skills (three-month-old infant)

<https://www.simulaid.com/product/101-125>

Resusci Baby Trainer



Amount Available: 2

Primary Use: Practicing Pediatric CPR skills, learning patient handling, and practicing first aid skills on an adult

CPR Prompt: Training & Practice Infant



Amount Available: 4

Primary Use: training in CPR, AED use, and the Heimlich maneuver on pediatric patient

<https://www.enasco.com/product/LF06012UG>

Resusci Baby QCPR Trainer



Amount Available: 1

Primary Use: training in CPR, AED use, and the Heimlich maneuver on pediatric patient

<http://www.laerdal.com/us/ResusciBaby>

Vascular Access Child Training System



Amount Available: 5

Primary Use: used to practice pediatric central line and femoral line insertion

Pediatric I.V. arm



Amount Available: 2

Primary Use: used to practice placing I.V in pediatric patient

OB/GYN Equipment

Sophie and Mum Full birth trainer



Amount Available: 1

Primary Use: Simulation of Cephalic birth, Breech birth, and shoulder dystocia

Placenta and Cord



Amount Available: 1

Primary Use: Allows for manual removal of the placenta to be simulated

Post-partum Uterus



Amount Available: 1

Primary Use: Allows for manual removal of the placenta to be simulated

Post-Partum Haemorrhage Kit (PPH)



Amount Available: 1

Primary Use: Allows simulation of bleeding after birth

Birth Ball



Amount Available: 2 sphere-shaped;
2 peanut-shaped

Primary Use: to practice birthing
positioning (commonly used in
midwifery courses)

Birth Pool



Amount Available: 1

Primary Use: simulates water birth practices and procedures

<http://www.birthpoolinabox.com/personal-pools/birth-pool-in-a-box-choose-your-size>

Mama Natalie Birthing Simulator



Amount Available: 2

Primary Use: wearable; used to create normal birthing scenarios as well as several birthing complications

<http://www.laerdal.com/us/mamaNatalie>

Fetal Monitoring & Labor Progress Model



Amount Available: 4

Primary Use: vaginal examinations, palpating fetal fontanel, and assessing labor progress, dilatation and position of fetal head



<http://www.childbirthgraphics.com/79851-Fetal-Monitoring-and-Labor-Progress-Model-Set>

Gynecological Model



Amount Available: 1 (comes with 7 different uteri)

Primary Use: practice palpation, pap smears, speculum use, etc.

<http://www.modelmed.com.au/>

Pelvic Exam Model



Amount Available: 1

Primary Use: used to practice giving pelvic exams

Childbirth Model Set



Amount Available: 1

Primary Use: used to demonstrate childbirth in relation to the pelvic bones

Doppler



Amount Available: 9

Primary Use: used to estimate the blood flow through blood vessels

Fluid Administration Models

Alaris Pump & Channel



Amount Available: 27 each

Primary Use: used for practicing IV administration

<http://www.carefusion.com/our-products/infusion/infusion-system-devices/alaris-pump-module>

PCA Pump



Amount Available: 3

Primary Use: used for practicing IV administration of patient-controlled anesthesia

<http://www.carefusion.com/our-products/infusion/infusion-system-devices/alaris-pca-module>

Kangaroo E-Pump



Amount Available: 18

Primary Use: used to simulate the delivery of enteral nutrition

<http://www.medtronic.com/covidien/products/enteral-feeding/kangaroo-epump>

Intradermal Injection Simulator



Amount Available: 8 new models; 8 old models

Primary Use: Practice intradermal injections (8 sites for practicing)

<https://www.enasco.com/product/LF01261U>

Central Line “Chester-Chest” Task Trainer



Amount Available: 2

Primary Use: practice the infusion, withdrawal, care, securement and dressings of several vascular access lines (central line, PICC line, IV site and optional Triple lumen jugular)

<http://www.vatainc.com/2400-chester-chesttm-with-new-advanced-arm-1588.html>

PICC Line “Peter-PICC” Task Trainer



Amount Available: 1

Primary Use: allows the teaching, practice and assessment of placing PICC lines

<http://www.vatainc.com/0600-peter-picc-linetm.html>

Adult I.V. arm



Amount Available: 4

Primary Use: used to practice I.V. placement

IV Hand & Arm Task Trainer



Amount Available: 4

Primary Use: practice IV insertion

IV Hand Task Trainer



Amount Available: 2

Primary Use: practice IV insertion

Intramuscular Injection Task Trainer



Amount Available: 2

Primary Use: practice intramuscular injection technique

Head-to-Toe Assessment Models

Diagnostic & Procedural Ear Trainer



Amount Available: 4 pediatric, 3 adult

Primary Use: practice examining the human ear, correctly diagnosing common diseases, and cleaning the ear canal

<https://www.enasco.com/product/LF01090U>

Eye Examination Simulator



Amount Available: 4

Primary Use: practice examining the human eye; training in identifying common eye diseases



<https://www.kyotokagaku.com/products/detail01/m82.html>

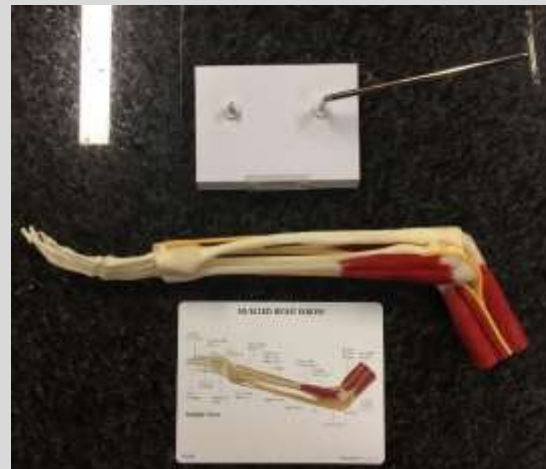
Eye Exam simulator



Amount Available: 1

Primary Use: practice examining the human eye; training in identifying common eye diseases

Muscled Joint Model Sets



Amount Available: 3 sets

Primary Use: Used to demonstrate various human joints

Each Set includes:

- Muscled Hip Model
- Muscled Right Knee
- Muscled Right Elbow
- Muscled Shoulder

Breast & Testicle Models

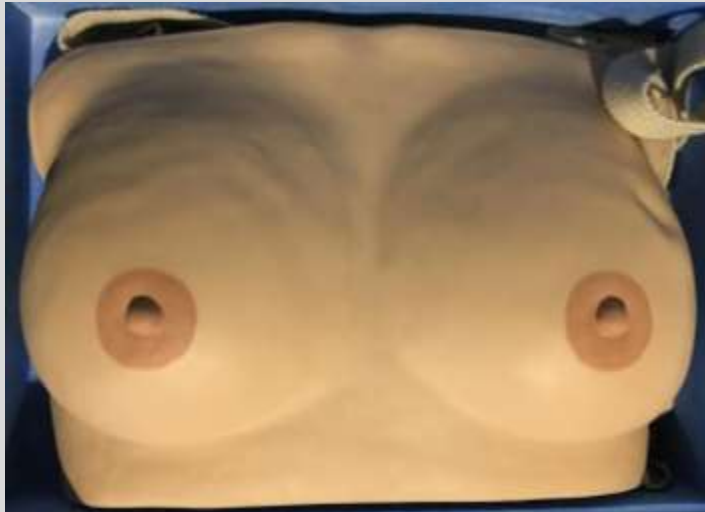
Breast Model: “Breast Teaching Model”



Amount Available: 1

Primary Use: non-wearable; used to practice breast palpation

Breast Model: “Inspection & Palpation of Breast Cancer Training Model”



Amount Available: 3

Primary Use: training tool for examination of breasts with cancer (includes straps – wearable)

http://www.kokenmpc.co.jp/english/products/life_simulation_models/nursing_education/lm-017/

Breast Model: “Wearable Breast Self Examination Model”



Amount Available: 2

Primary Use: can be worn in order to practice breast self-examination

https://www.a3bs.com/wearable-breast-self-examination-model-l50,p_1167_366.html

Breast Model: “BSE Model”



Amount Available: 1

Primary Use: non-wearable;
used to compare breast and
underarm tissue with and
without lumps.

Breast Model: “ABC Cup BSE Model Set”



Amount Available: 1

Primary Use: Practice palpating with various breast sizes

<http://www.healthedco.com/26540e-ABC-Cup-BSE-Model-Set-Brown>

Breast Model: “Breast Exam Simulator”



Amount Available: 5

Primary Use: Practice breast palpation techniques

<https://www.enasco.com/product/LF00984U>

Testicle Model



Amount Available: 8

Primary Use: used when practicing male exams

Prostate Exam Model



Amount Available: 2

Primary Use: used to practice giving prostate exams

Carts

Crash Cart



Amount Available: 2

Primary Use: used to practice a “code”

SIMvs Bundle Loaded Crash Cart



Amount Available: 1

Primary Use: used to practice a “code”

Hemorrhage Cart



Amount Available: 2

Primary Use: used to practice management of patient hemorrhages

Adult Airway Cart

Amount Available: 1

Primary Use: used in simulations that require advanced airway management for adult patients



Pediatric Airway Cart/Kit

Amount Available: 1

Primary Use: used in simulations that require advanced airway management for pediatric patients



Isolation Cart



Amount Available: 2

Supplies in each cart:

- Clean gloves (S,M,L)
- Goggles
- Procedure masks
- Isolation gowns